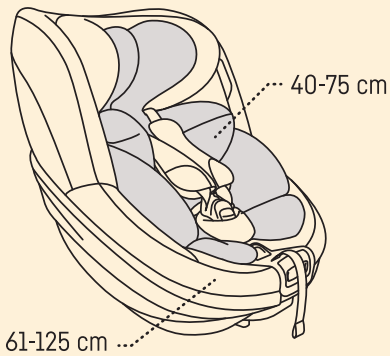


Quick Guide

BeSafe®



BeSafe Beyond B

- Rear facing
- 40 - 125 cm
- From birth until 6 years
- Max. weight: 22 kg

SCAN FOR MORE INFO >



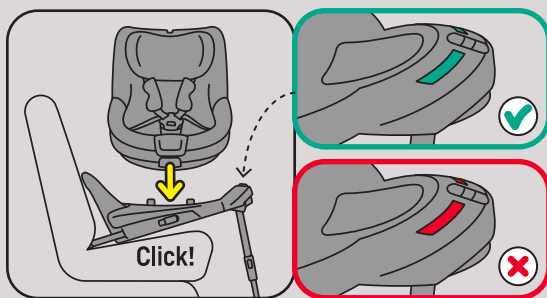
<https://hello.besafe.com/en/support/besafe-beyond-b>

support.global@besafe.com

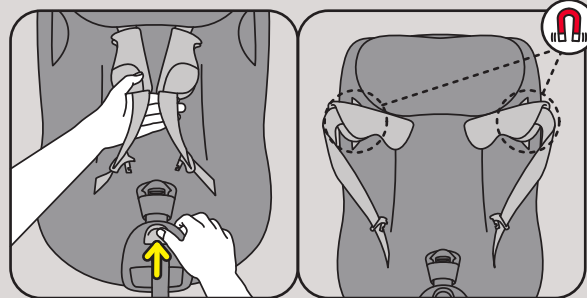
www.besafe.com

! Safety steps:

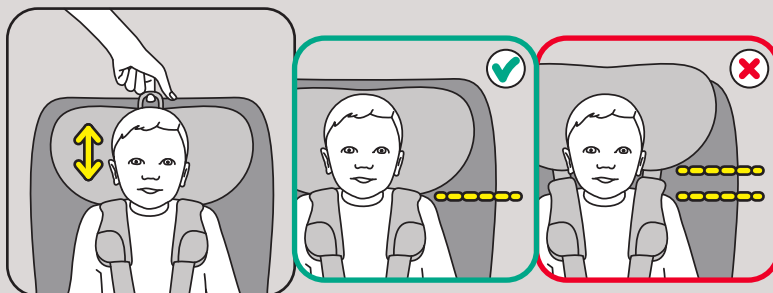
1 Place the seat



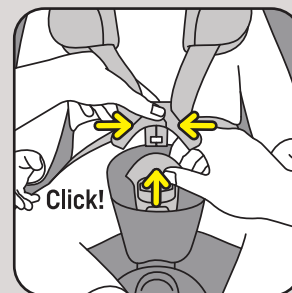
2 Loosen the harness



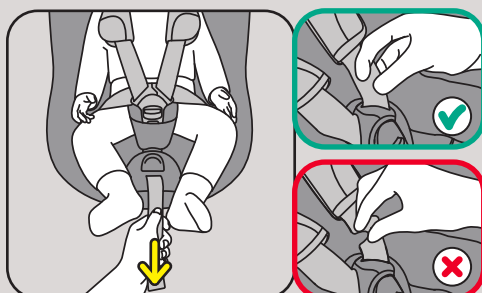
3 Adjust the headrest height



4 Close the harness



5 Tighten the harness



6 Move the seat to driving direction

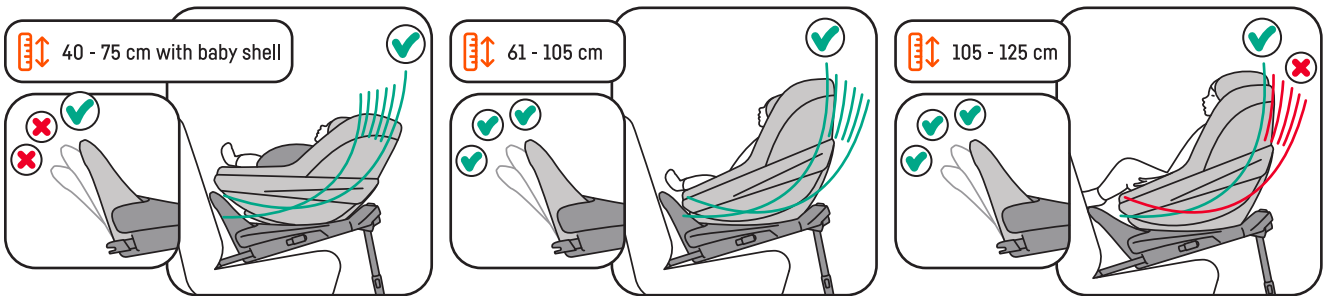


Optional steps:

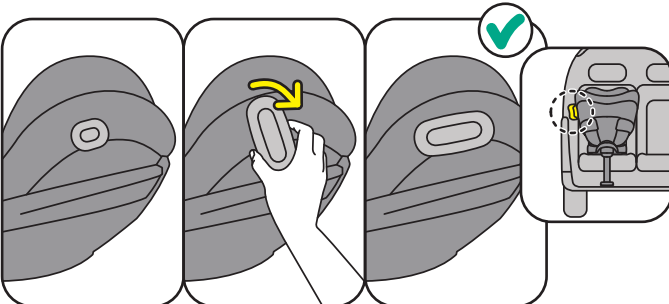
Rotating the seat



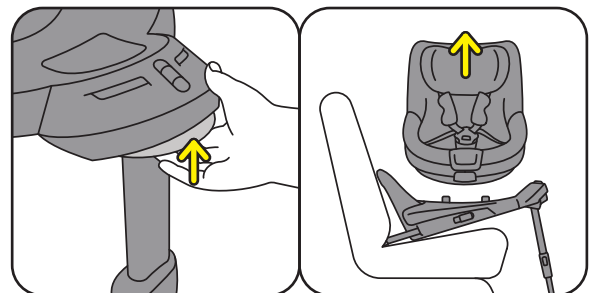
Reclining the seat



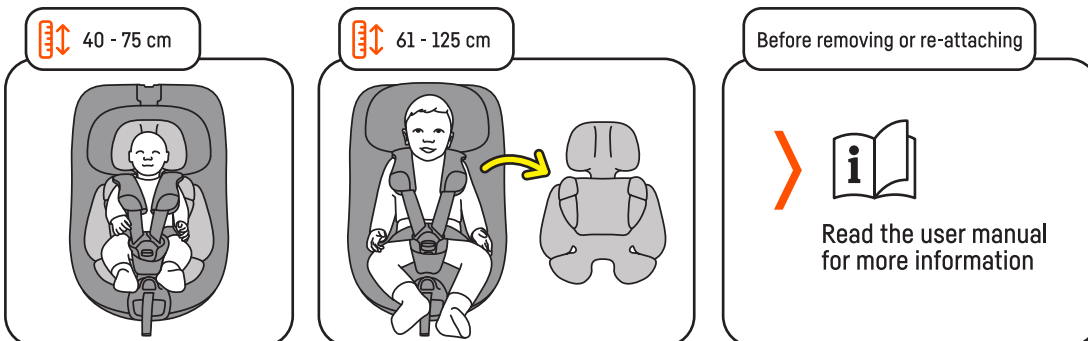
Attaching the SIP+



Removing the seat from the base



Using the baby shell:



This Quick Guide is made of polypropylene. Please recycle according to your local regulations.